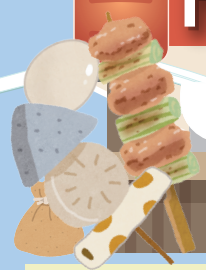




# Fukuoka Hakata Yatai MAP



FUKUOKA HAKATA YATAI MAP

### The ABC's of YATAI Stalls

**When do they open?**  
 Opening times depend on the stalls. The earliest stalls open around 6 p.m. Most open between 6:30 and 7 p.m. The *yatai* may be closed during bad weather.

**Check the Payment System Beforehand**  
 Check the price sheet before you order. Depending on the stall there may be an *otoshi* appetizer surcharge. Ask when you enter.

**Check for the Nearest Restroom**  
 You can use the nearest public restroom, or a restroom at a convenience store that is partnered with the *yatai*. Check where the nearest restroom is beforehand.

**CARD** Accepts credit cards

Receipts available

Public restroom

Underground restroom (available for use until 1:30 a.m.)

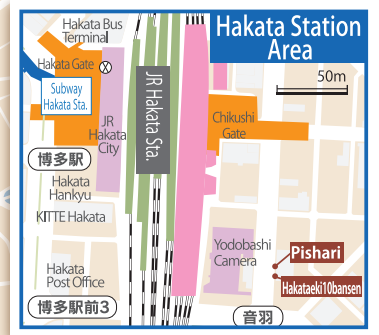
**FUKUOKA CITY Official Tourist Guide**



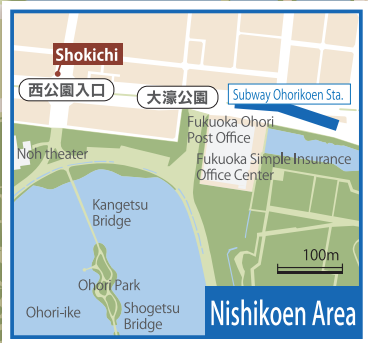
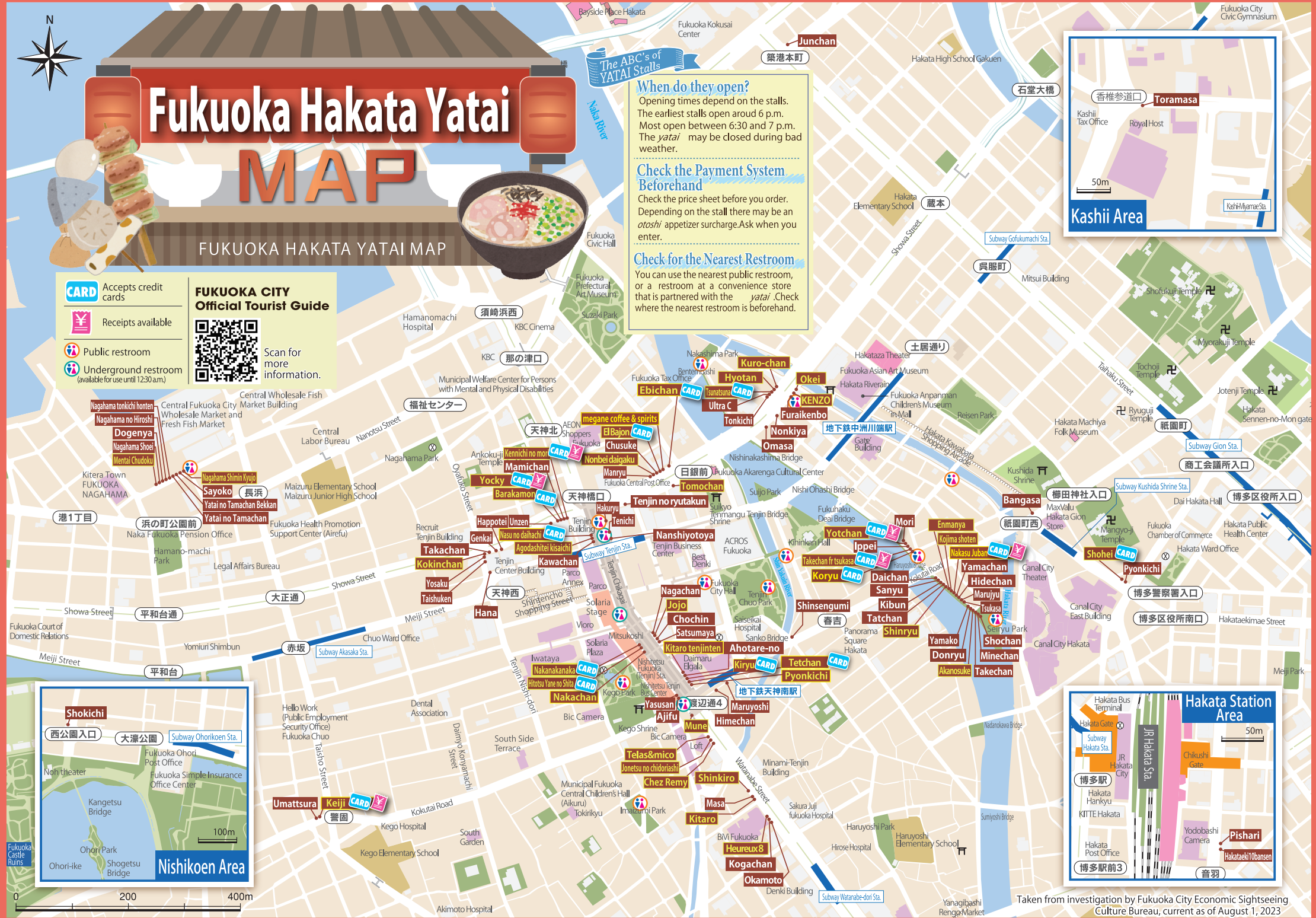
Scan for more information.



Kashii Area



Hakata Station Area



Nishikoen Area