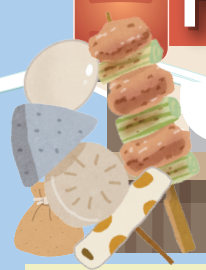




Fukuoka Hakata Yatai MAP



FUKUOKA HAKATA YATAI MAP

The ABC's of YATAI Stalls

When do they open?
 Opening times depend on the stalls. The earliest stalls open around 6 p.m. Most open between 6:30 and 7 p.m. The *yatai* may be closed during bad weather.

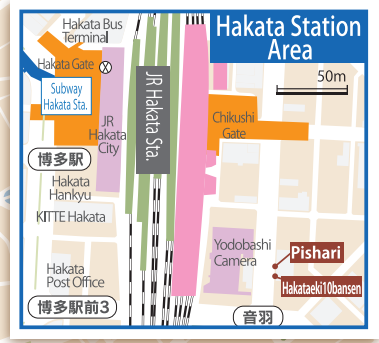
Check the Payment System Beforehand
 Check the price sheet before you order. Depending on the stall there may be an *otoshi* appetizer surcharge. Ask when you enter.

Check for the Nearest Restroom
 You can use the nearest public restroom, or a restroom at a convenience store that is partnered with the *yatai*. Check where the nearest restroom is beforehand.

- CARD** Accepts credit cards
- Receipts available
- Public restroom
- Underground restroom (available for use until 12:30 a.m.)

FUKUOKA CITY Official Tourist Guide

Scan for more information.



Taken from investigation by Fukuoka City Economic Sightseeing Culture Bureau, current as of August 1, 2023